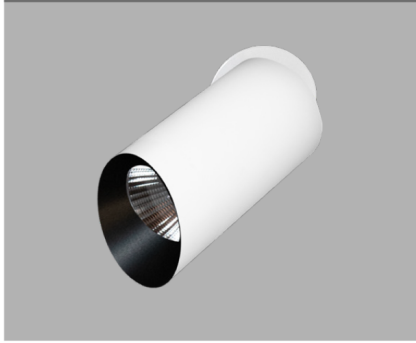


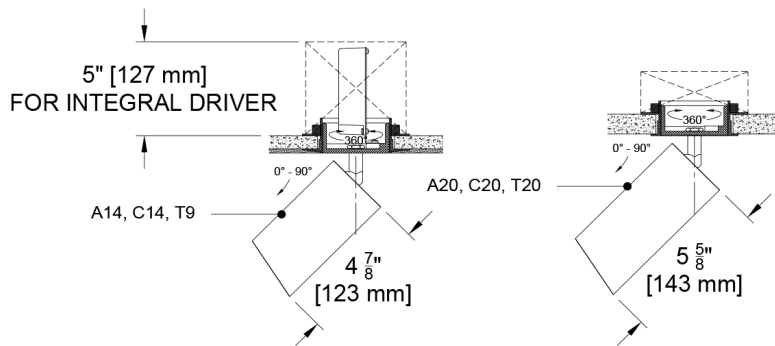
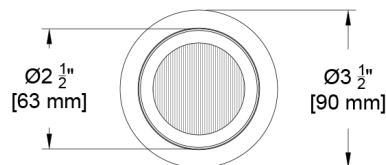
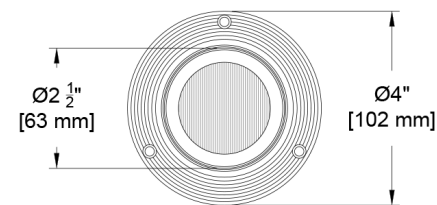
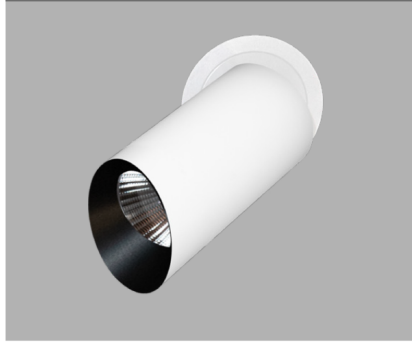
Scope Original- Wall Wash

The Scope Monopoint offers several standard mounting conditions, the system is highly flexible and facilitates modifications. If you need a mounting condition you don't see, just ask. The Monopoint offers most of the same sources and drivers as it's downlight kin allowing flawless transition from recessed to exposed fixtures. Last but not least, the aluminum components, machined in New Jersey, allow for powder coat painting or anodize, opening our full pallet of 40 standard finishes plus the option for RAL# or custom paint match.

2.5" Round Z (Flangeless)



2.5" Round F (Flanged)



PROJECT:

TYPE:

SPECIFIER:

DATE:

Key Points (SCOM-RA.)

Housing

- CSA listed to UL 1598 - damp rated
- Precision CNC machined aluminum in New Jersey
- 40 finish options + Custom/RAL#
- Multiple mounting options, including sloped ceilings
- Flanged (can be used in wood or GWB), Flangeless, or Panel Trim (millwork)
- Adjustable 360° degree rotation and 90° degree tilt

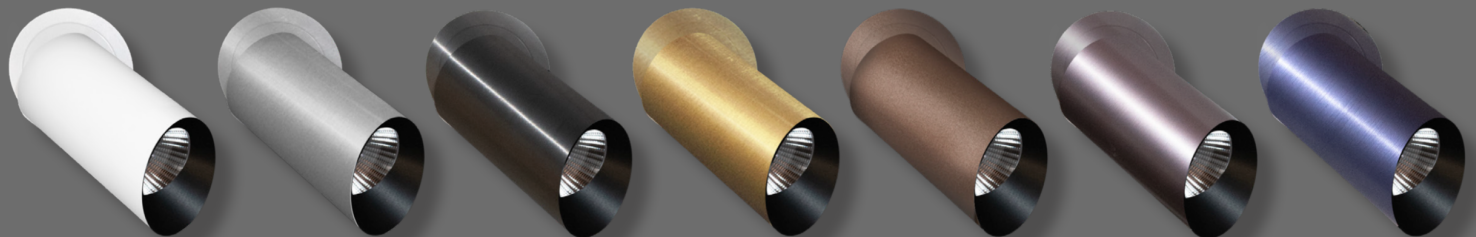
Source / Optics

- Up to 1307 delivered lumens
- <2 MacAdams Ellipses (<2 SDCM) for fixed white
- 2400, 2700, 3000, 3500, 4000K, Ambient Dim (1900K to 3000K)
- 2 options for tunable white - 2700k to 6500k and 1800k to 4000k
- 90+ CRI, 60+ R9 Standard, 95+ CRI, 90+ R9 available with Ambient Dim option
- Supports CA Title 24 Requirements to JA8 in most configurations
- Lifetime: L87B3>55,000 hours at 40°C Ambient

Driver And Control

- Drivers integral with fixture in some mounting options - see drawings
- Phase, 0-10, DALI-2, DMX, Ecosystem or Wireless Control
- Flicker free to IEEE 1789-2015 available with EldoLED selection
- Universal 120-277v

Sample Finish Options - See finish guide for full spectrum of colors



Ordering Codes

PROJECT: SPECIFIER:
DATE: TYPE: QUANTITY:

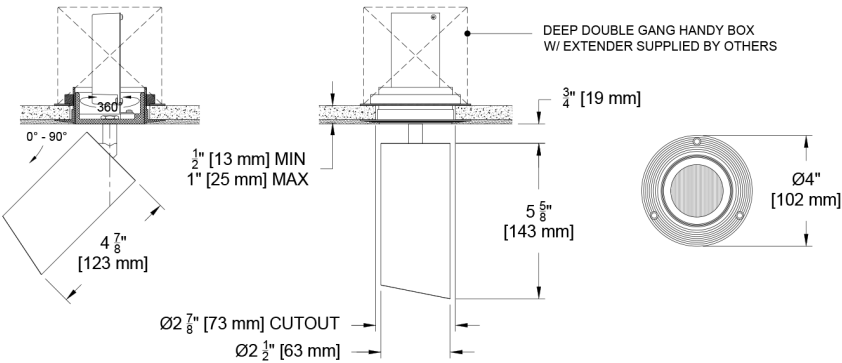
Ordering Code Example: SCOM-RA-F-SM-C14-30-35-WW-C1-A01-91L

FIXTURE	TRIM	MOUNTING	SOURCE / WATTS	CCT	BEAM	DRIVER / CONTROL	HEAD FINISH	ACCESSORIES
SCOM-RA.								
Scope Original 2.5" Mono-point - Round - Wall Wash	Standard (2.5") F Flanged Trim Z Flangeless Trim Canopy (4") CP Canopy Plate for use with 4" Diameter Pancake Box/Octagonal Box	SM * † Surface Mount SMR ^ Δ Surface Mount SMHS -Surface Mount * † w/ Hang Straight SCSMR Sloped Ceiling Surface Mount ^ Δ w/ Hang Straight SMLJB - Surface Mount † Large Junction Box PM Panel Mount * † PMR ^ Δ Panel Mount SCPM ^ † Sloped Wood Ceiling Panel Mount SCPMR ^ Δ Sloped Ceiling Panel Mount furnished with Hang Straight CM Δ Canopy Mount Retro-fit Installation SHM Δ Shallow Surface Mount Shallow Panel Installation SHPM Δ Shallow Panel Mount * Deep double gang Handy box supplied by others for driver enclosure ^ Double gang Handy box supplied by others for fixture mount and low voltage wiring † Intergral Driver Δ Remote Driver # - Bracket Pan available - Add #BP after mounting option	Citizen C14 ● ● 14W 1292Lm* 90+CRI, 60+R9 C20 ● ● 21W 1422Lm** 90+CRI, 60+R9 Tunable T9 ● ● 10W 587Lm 90+CRI, 70+R9 Tunable White T20 ● ● 21W 1490Lm^ 90+CRI, 60+R9 Tunable White RGBW 90+CRI, 60+R9 T14 90+CRI, 60+R9 Tunable White Ambient Dim™ A14 ● ● 15W 851Lm* 95+CRI, 90+R9 A20 ● ● 15W 858Lm 95+CRI, 90+R9 ● ● Supports CA Title 24 compliance to JA8 requirements (except 1840 20° and 40°)	24 2400K 27 2700K 30 3000K 35 3500K 40 4000K Tunable TW1840 1800-4000K Tunable White w/ E1, E2, E3, E4 TW2765 ● ● 2700-6500K Tunable White w/ E1, E2, E3, E4 RG1280 1200-8000K RGBW Dynamic Color Changing *Requires E2 or E4 Ambient Dim™ 2722 2700-2200K *A14 Only 3019 3000-1900K 3022 3000-2200K *A14 Only	WW Wall Wash	C1 0-10 1.0%, UNV (120-277V) linear C2 ELV/Triac 1.0%, (120-277V) linear E1 0-10 0.1%, UNV (120-277V) log E2 DALI-2 0.1%, UNV (120-277V) log E3 0-10 0.1%, UNV (120-277V) linear E4^ DMX 0.1%, UNV (120-277V) Universal DMX Driver/Controller RGBW-DMX ^ INCLUDES DMX/RDM COMPATIBLE DRIVER WITH BUILT-IN DECODER - CONTROLLER BY OTHERS Lutron LD Digital Ecosystem* 1.0%, UNV (120-277V) ECO Hi-Lume SoftOn/Fade-to-Black LDE1 * Requires remote mounting ^integral driver standard, remote optional	AM01 Black Matte Anodize^ AMXX Specialty Matte Anodize Color^ AM1-AM36 A32 Clear Anodize^ AXX Specialty Anodize Color^ A1-A36 W White Paint^ PXX Specialty Paint Color^ P01-P15 B05 Satin Brass^ BXX Brass Finishes^ B01-B07 ^Stem comes in selected color * See Finish Guide	Other STM Stem standard length 3/4" For custom size, indicate in inches EM Emergency Pack Controls LR Lutron Wireless RF PowPak ATH Lutron Athena Wireless Node Must be used with E2 driver (DALI-2) CA Casambi Wireless BLE to be paired with driver

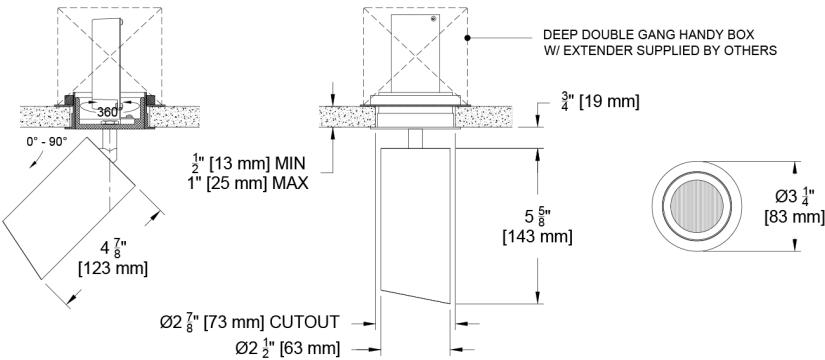


Ceiling Cutouts and Dimensions

Flangeless Monopoint (Integral Driver)	Plaster Surface Mount (SM)	Integral Driver
(SCOM-RA-Z-SM-)		See <i>Integral Driver Detail</i> page for recessed depth and j-box configurations by driver type.



Flanged Monopoint (Integral Driver)	Flanged Surface Mount (SM)
(SCOM-RA-F-SM-)	



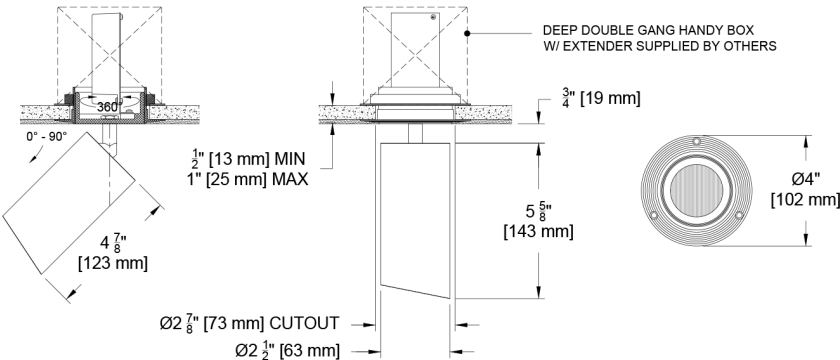
Flangeless Monopoint (Integral Driver)	Panel Mount (PM)	Panel Mount Detail
(SCOM-RA-Z-PM-)		

Ceiling Cutouts and Dimensions

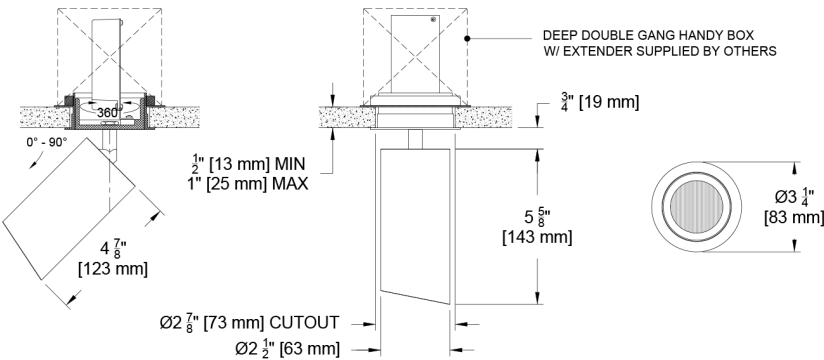
Flangeless Monopoint (Remote Driver)		Plaster Surface Mount (SMR) (SCOM-RA-Z-SMR-)	Remote Driver Box for E1, E2, E3, C1, C2
Flangeless Monopoint (Remote Driver)		Flanged Surface Mount (SMR) (SCOM-RA-F-SMR-)	Remote Driver Box for E4, LD
Flangeless Monopoint (Remote Driver)		Panel Mount (PMR) (SCOM-RA-Z-PMR-)	Panel Mount Detail

Ceiling Cutouts and Dimensions

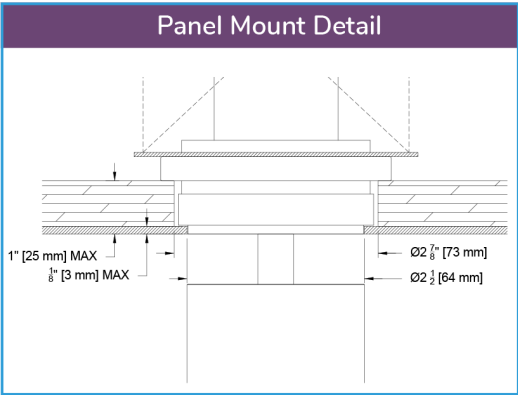
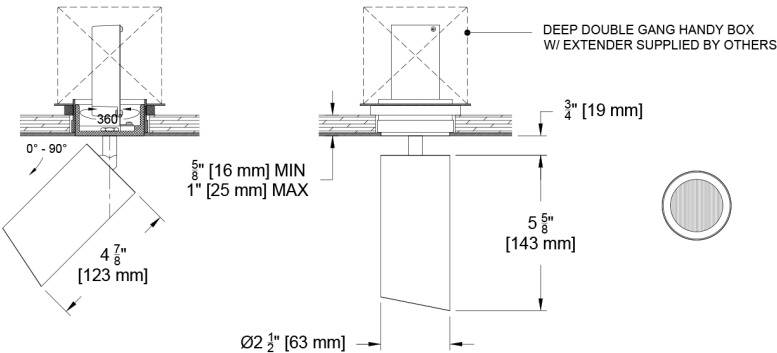
Flangeless Monopoint (Integral Driver)	Plaster Surface Mount (SM)	Integral Driver
(SCOM-RA-Z-SM-)		See <i>Integral Driver Detail</i> page for recessed depth and j-box configurations by driver type.



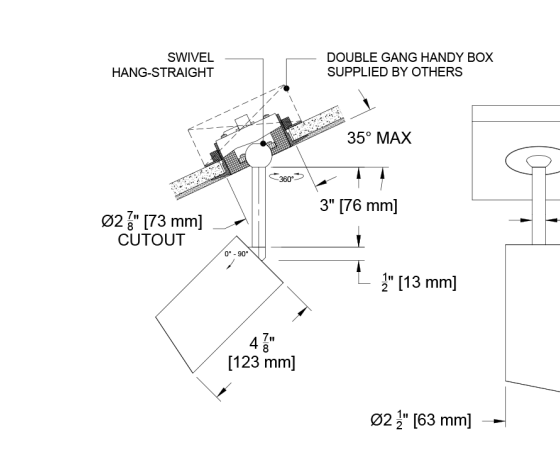
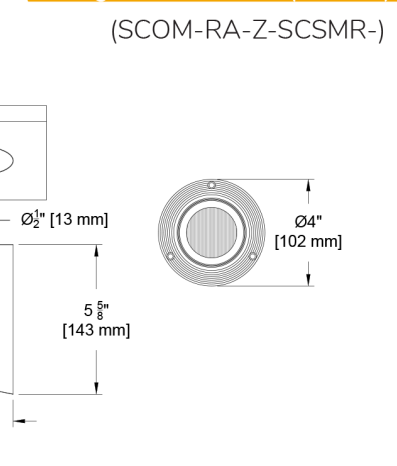
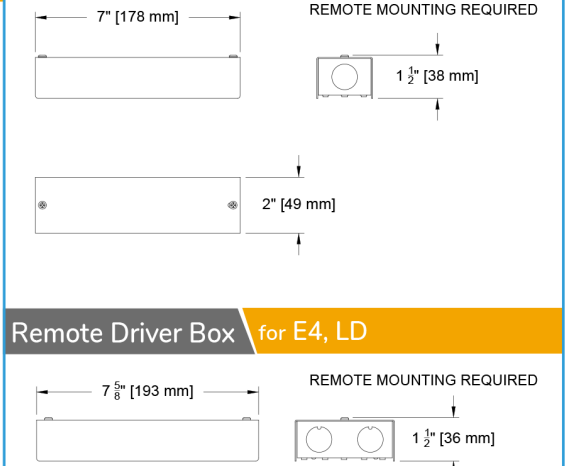
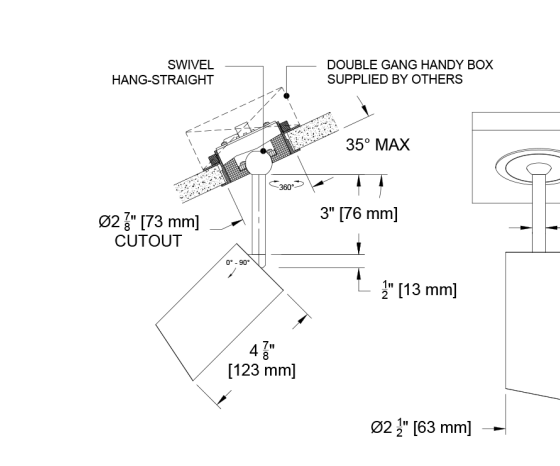
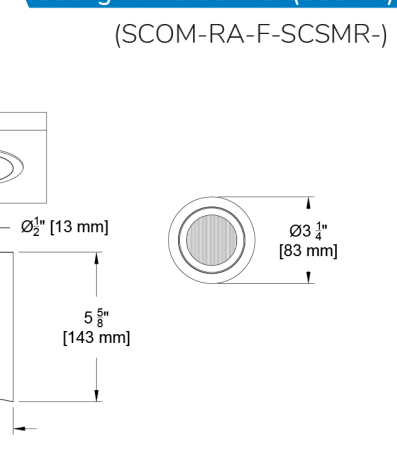
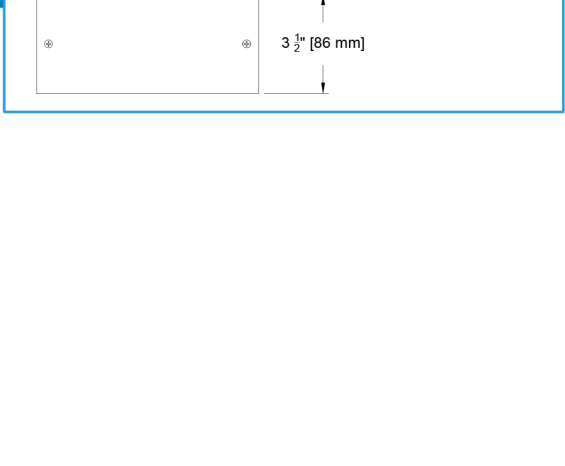
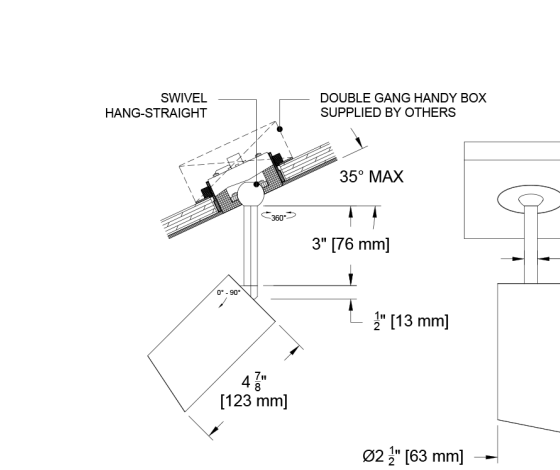
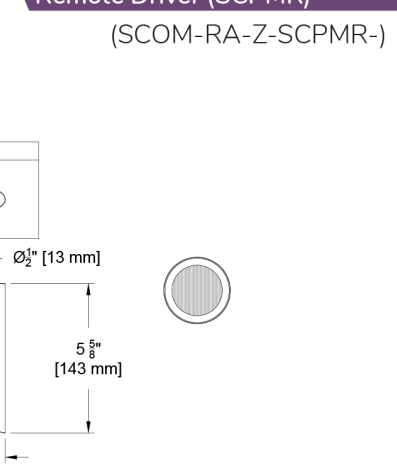
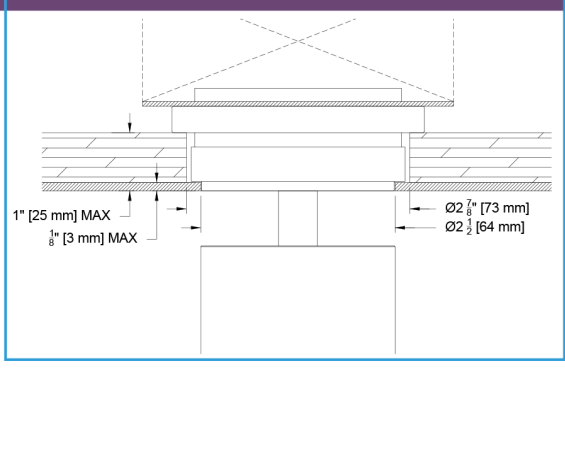
Flanged Monopoint (Integral Driver)	Flanged Surface Mount (SM)
(SCOM-RA-F-SM-)	



Flangeless Monopoint (Integral Driver)	Panel Mount (PM)	Panel Mount Detail
(SCOM-RA-Z-PM-)		



Ceiling Cutouts and Dimensions

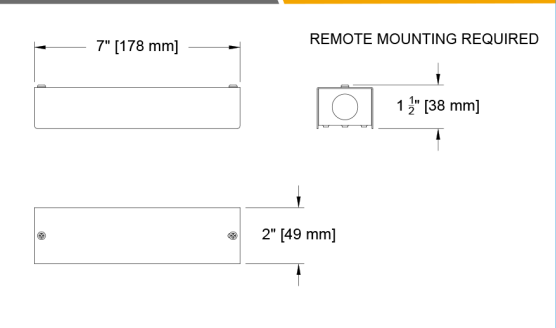
Flangeless Monopoint (Remote Driver)	Plaster Surface Mount Sloped Ceiling Remote Driver (SCSMR) (SCOM-RA-Z-SCSMR-)	Remote Driver Box for E1, E2, E3, C1, C2
		
Flanged Monopoint (Remote Driver)	Flanged Surface Mount Sloped Ceiling Remote Driver (SCSMR) (SCOM-RA-F-SCSMR-)	Remote Driver Box for E4, LD
		
Flangeless Monopoint (Remote Driver)	Panel Mount Sloped Ceiling Remote Driver (SCPMR) (SCOM-RA-Z-SCPMR-)	Panel Mount Detail
		

Ceiling Cutouts and Dimensions

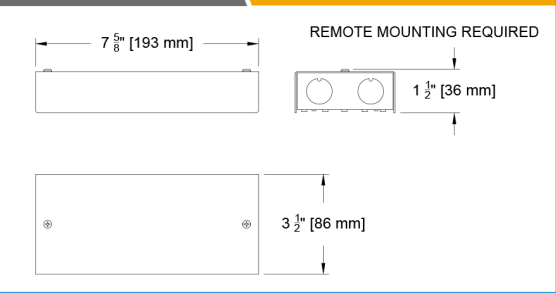
Flangeless Monopoint (Integral Driver)

Plaster Surface Mount Sloped Ceiling Integral Driver (SCSMR)
(SCOM-RA-Z-SCSMR-)

Remote Driver Box for E1, E2, E3, C1, C2



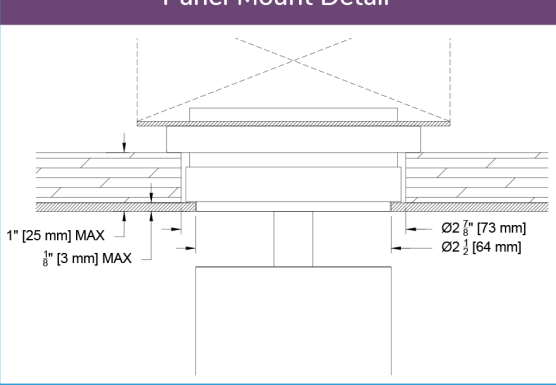
Remote Driver Box for E4, LD



Flanged Monopoint (Integral Driver)

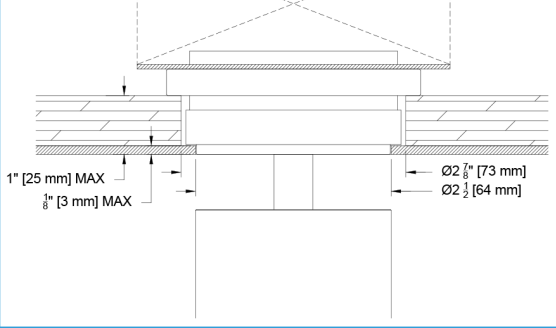
Flanged Surface Mount Sloped Ceiling Integral Driver (SCSMR)
(SCOM-RA-F-SCSMR-)

Panel Mount Sloped Ceiling Integral Driver (SCPMR)
(SCOM-RA-Z-SCPMR-)



Flangeless Monopoint (Integral Driver)

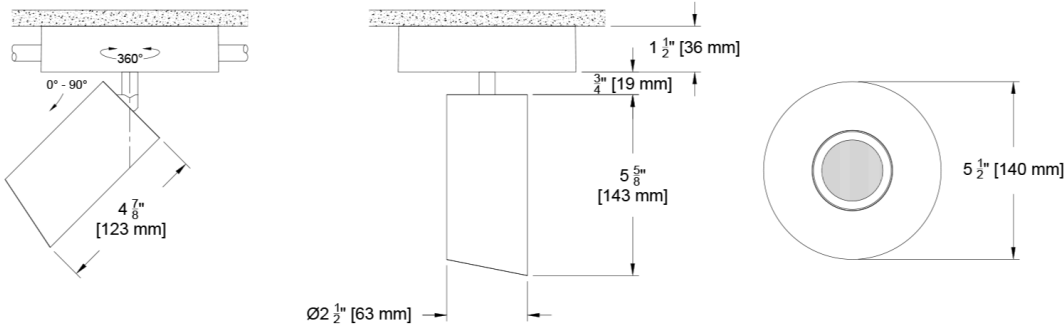
Panel Mount Sloped Ceiling Integral Driver (SCPMR)
(SCOM-RA-Z-SCPMR-)



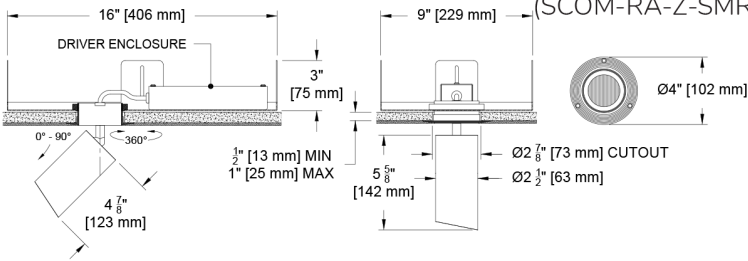
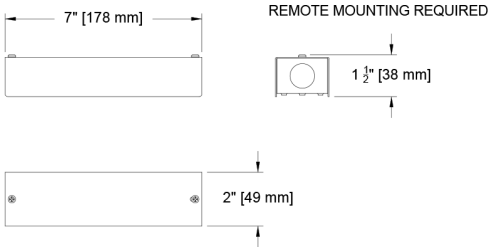
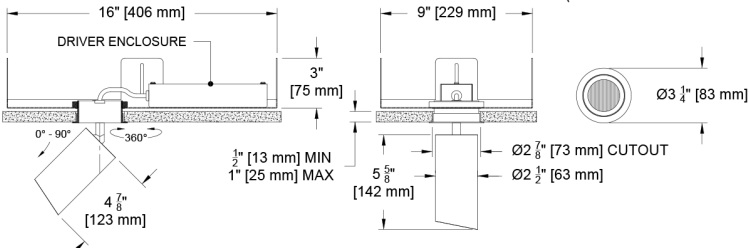
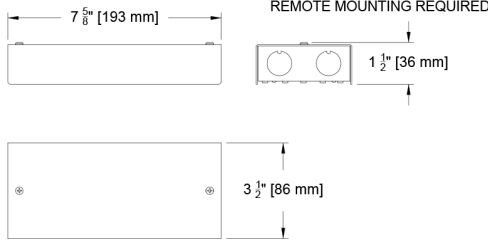
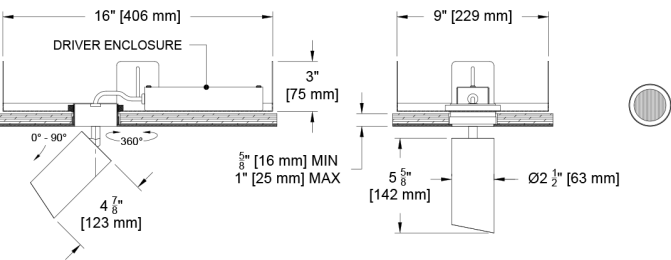
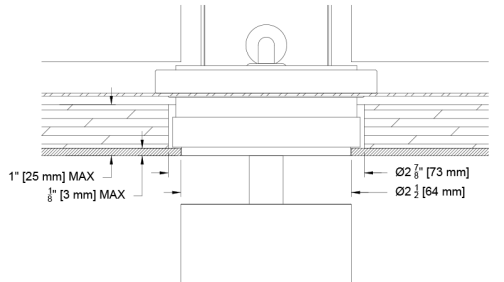
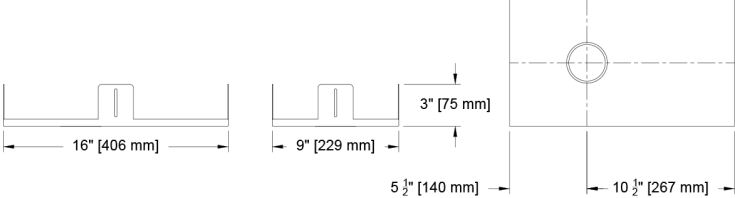
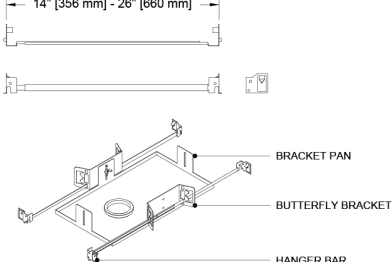
Ceiling Cutouts and Dimensions

Surface Mount (Integral Driver)

Large J-Box
(SCOM-RA-Z-SMLJB-)



Ceiling Cutouts and Dimensions

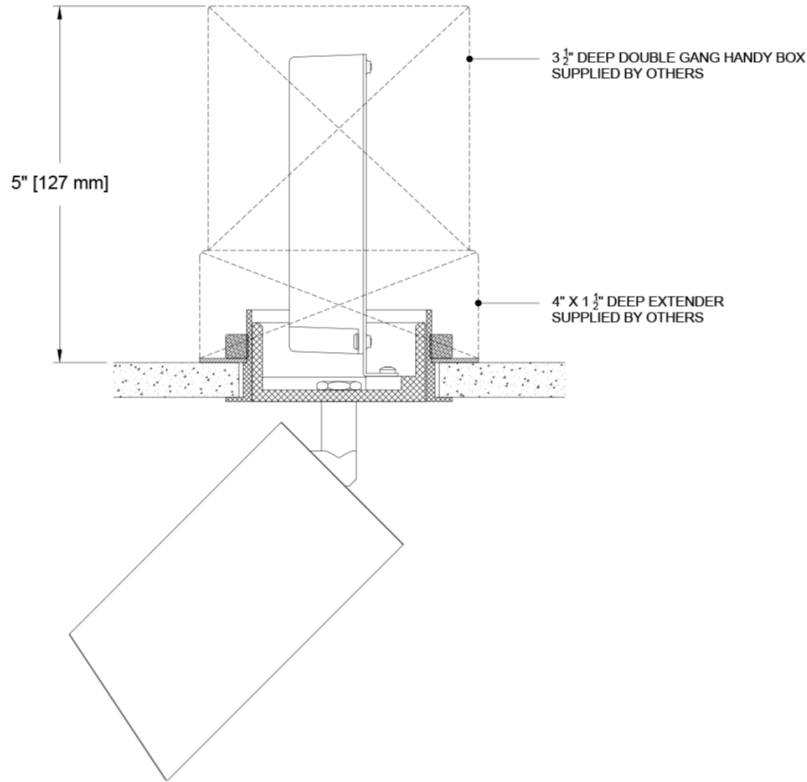
<p>Flangeless Monopoint (Integral Driver)</p>  <p>(SCOM-RA-Z-SMR#BP-)</p>	<p>Plaster Surface Mount (SMR) Bracket Pan (#BP)</p>	<p>Remote Driver Box for E1, E2, E3, C1, C2</p> 
<p>Flanged Monopoint (Integral Driver)</p>  <p>(SCOM-RA-F-SMR#BP-)</p>	<p>Flanged Surface Mount (SMR) Bracket Pan (#BP)</p>	<p>Remote Driver Box for E4, LD</p> 
<p>Flangeless Monopoint (Integral Driver)</p>  <p>(SCOM-RA-Z-PMR#BP-)</p>	<p>Panel Mount (PMR) Bracket Pan (#BP)</p>	<p>Panel Mount Detail</p> 
<p>Bracket Pan Detail</p> 	<p>BP</p>	<p>Bracket Pan Mounting Detail</p> 

Integral Driver Detail

J-Box Configurations by Driver Type

Integral Driver J-Box Configuration

E1, E2, E3, C1, C2 Drivers

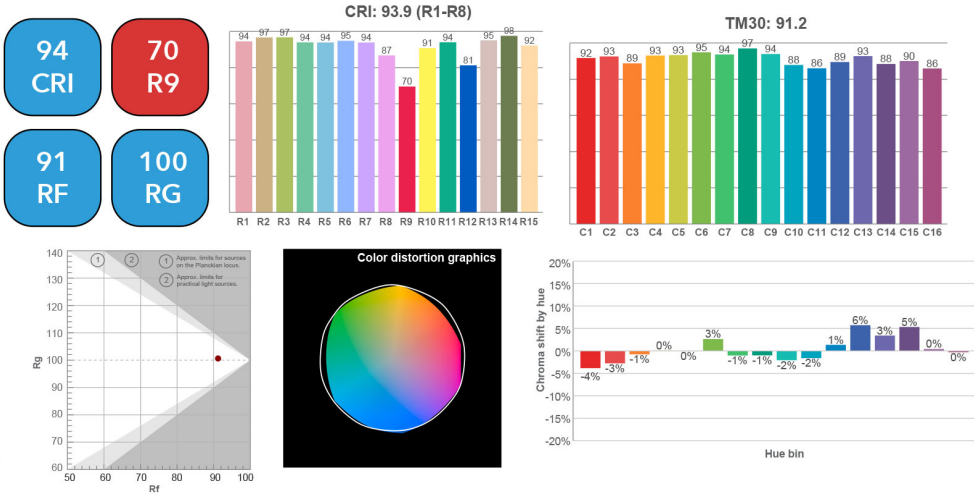


Color Data

All data below are delivered lumens. Color and flux information based on goniometer measurements of production representative product. All values can vary +/- 10% from LED manufacturer data range as listed on their datasheet.

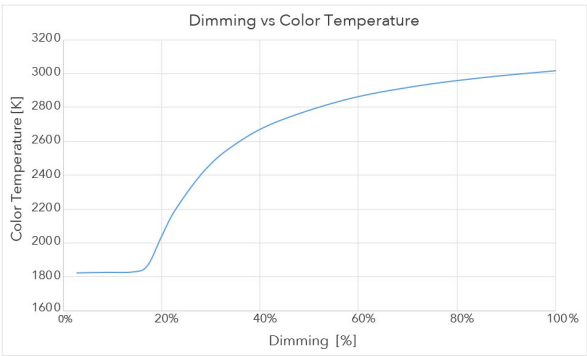
Citizen Source C14, C20

- <2 MacAdam Ellipse (<2 SDCM)
- 90+ CRI and RF
- 60+R9, Hue Bin 1

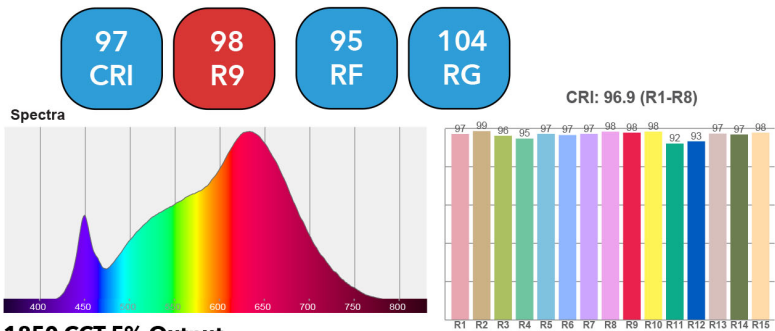


Ambient Dim Source A14 (AD - 3000k to 1900k)

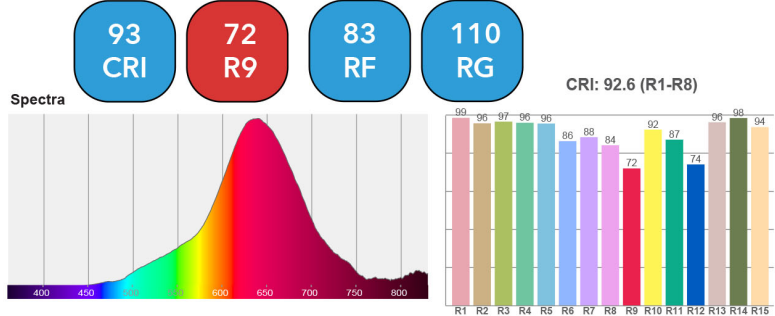
- <3 MacAdam Ellipse (<3 SDCM)
- 95+ CRI and RF
- 90+R9, Hue Bin 1
- Follows Black Body Locus through dimming range



3000 CCT Full Output



1850 CCT 5% Output



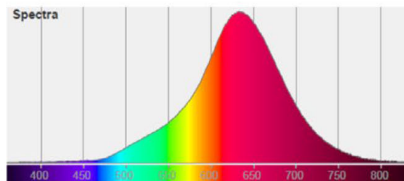
Tunable White source T9 - CCT 1840 (1800k to 4000k)

- <3 MacAdam Ellipse (<3 SDCM)
- 94 CRI average across all CCTs
- 76 R9 average across all CCTs
- Available in both wired or wireless control

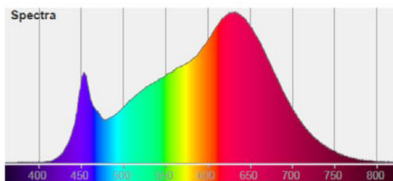
Color Temp	TUNABLE WHITE - 1800-4000K						
	1800	2200	2500	2700	3000	3500	4000
System Watts	10	10	10	10	10	10	10
Delivered Lumens	360	412	445	467	513	543	543
Luminaire Efficiency	36	41	44	46	51	54	54

Flux and Color data based on 20° measurement at 2700k. All other values are extrapolated from actual and analytical tests.

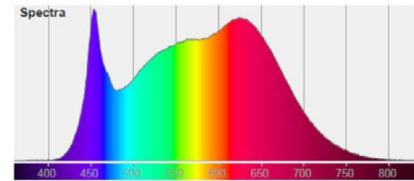
Spectral Power Distributions at all listed CCTs available upon request



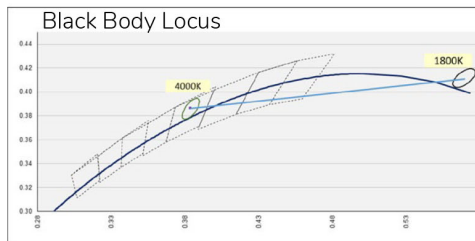
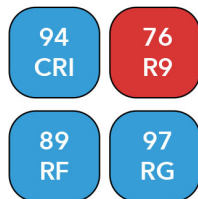
1800K



3000K



4000K



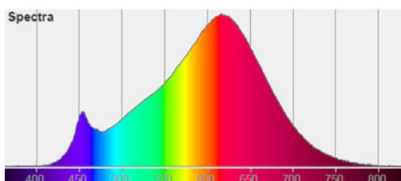
Tunable White source T9 - CCT 2765 (2700k to 6500k)

- <3 MacAdam Ellipse (<3 SDCM)
- 94 CRI average across all CCTs
- 96 R9 average across all CCTs
- Available in both wired or wireless control

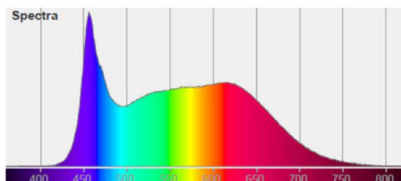
Color Temp	TUNABLE WHITE - 2700-6500K								
	2700	3000	3500	4000	4500	5000	5500	6000	6500
System Watts	10	10	10	10	10	10	10	10	10
Delivered Lumens	552	569	587	574	587	586	585	584	590
Luminaire Efficiency	56	58	60	59	60	60	60	60	60

Flux and Color data based on 20° measurement at 4500k. All other values are extrapolated from actual and analytical tests.

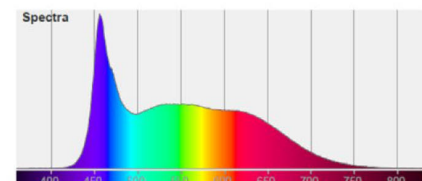
Spectral Power Distributions at all listed CCTs available upon request



2700K



5000K



6500K

